



Woolly

Woolly er et populært ullstoff med topp testresultater som 150 000 martindale og 6 i lysekthet. Lagerføres i hele 46 forskjellige farger. Perfekt til møbeltrekk, pynteputer, interiørdetaljer osv. Woolly er vevd av resirkulert ull som gir positiv miljøeffekt takket være mindre vannforbruk, energi og CO₂ utslipp.

Bruksområder:

Dekorasjonstekstil, Møbelbekledning offentlig miljø, Gardiner/draperi, Møbelbekledning privat bolig, Sengeoverkast

Bredde:	150 cm ±2 cm	Søm skridning Veft:	3,5 mm (ISO 13936-2)
Materiale:	70% RECYCLED WOOL, 25% Polyamide, 5% Andre fibre	Strekstyrke Varp:	511 N
Vekt (g/m ²):	400	Strekstyrke Veft:	301,4 N
Rull lengde i m:	40	Rivestyrke Varp:	43 N
Type:	Farget garn	Rivestyrke Veft:	28,9 N
GRS sertifikat:	CU1049784GRS-2023-00050154	Lydbasorbasjon:	Klass C, aw 0,70 (ISO 354)
Branntest:	BS 5852-1 Source 0 & 1, Cal TB 117, EN 1021-1 & 2, EN 13773	Dimensjonsendringer Varp:	- 1,14 %
Martindale:	150000 (ISO 12947-2)	Dimensjonsendringer Veft:	- 0,67 %
Pilling:	4 (ISO 12945-2)	Fargeekthet mot vannflekker:	ISO 105-E16
Gniethet tørr:	5 (ISO 105-X12)	Fargeendring:	4-5
Gniethet våt:	4-5 (ISO 105-X12)	Fargeekthet mot svette:	ISO 105-E04
Lysekthet:	6 (ISO 105-B02)	Flekkning, multi-fiber:	4
Søm skridning Varp:	2,8 mm (ISO 13936-2)	Fargeendring:	4-5
		Fargeekthet mot vann:	4-5 (ISO 105-E01)

Ullstoffene Woolly, Woolly Wide, Margrethe og Lillehammer er fremstilt uten bruk av vann i fargingsprosessen. Fargene velges og de ulike nyansene blandes for å få den endelige fargen. Mindre fargeavvik må anses som et særpreg fra disse egenskapene.





Wooly 2142 raspberry
1
1038801



Wooly 2019 marine 2
1038802



Wooly 1011 bottle
green 3
1038803



Wooly 1002 koks 4
1038804



Wooly 1008 brown 6
1038806



Wooly 1042 grafit 7
1038807



Wooly 1016 bone 10
1038810



Wooly 1044 cerise 11
1038811



Wooly 2079 green 13
1038813



Wooly 1037 sand 16
1038816



Wooly 1000 light grey
17
1038817



Wooly 2240 petrol 22
1038822



Wooly 1010 forest 23
1038823



Wooly 2151 beige 26
1038826



Wooly 2012 B terra
31
1038831



Wooly 1026 light
brown 36
1038836



Wooly 2011 tulip 41
1038841



Wooly 1007 navy 42
1038842



Wooly 1003 black 44
1038844



Wooly 1001 antracit
47
1038847



Wooly 2238
aubergine 61
1038861



Wooly 2014 plum 71
1038871



Wooly 2020 lilac
melange 81
1038881



Wooly 2255 dark lilac
91
1038891



Wooly Plus 2270
Lime
1039001



Wooly Plus 2252 Soft
green
1039002



Wooly Plus 9759 Leaf
1039003



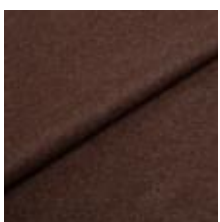
Wooly Plus 2269
Emerald
1039004



Wooly Plus 2256 Ivory
melange
1039005



Wooly Plus 9202
Taupe
1039007



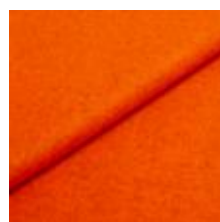
Wooly Plus 1008 B
Ebony
1039008



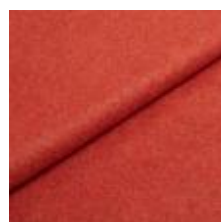
Wooly Plus 2272
Dijon
1039009



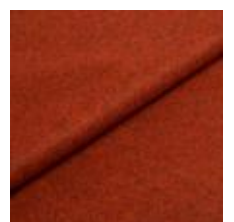
Wooly Plus 9145
Pumpkin
1039010



Wooly Plus 2278
Orange melange
1039011



Wooly Plus 2016 B
Dark terracotta
1039012



Wooly Plus 1040
Brick melange
1039013



Wooly Plus 2153 Java
melange
1039014



Wooly Plus 2011 B
Red
1039015



Wooly Plus 9872 Pink
1039016



Wooly Plus 0091
Berry
1039017



Wooly Plus 0106
Turquoise
1039018



Wooly Plus 2287 Opal
1039019



Wooly Plus 9860 Soft
blue
1039021



Wooly Plus 2279
Ocean
1039022



Wooly Plus 9233
Wine
1039023



Wooly Plus 2288
Soda
1039024



Wooly Trend 380037
Rust
1039025



Wooly Trend 2301
Marsala
1039026



Wooly Trend 2302
Court
1039027



Wooly Trend 840069
Juniper
1039028



Wooly Trend 849139
Teal
1039029



Wooly Trend 228881
Lapis
1039030



Wooly Trend
22882287 Aquamarin
1039031



Wooly Trend 842287
Lagoon
1039032

You control your data

We and our partners use technologies, including cookies, to collect information about you for various purposes, including:

- Necessary – makes the website usable.
- Statistics – help us understand how visitors interact with our website.
- Marketing – Used by advertisers to help us display relevant ads in other channels.

By clicking 'Accept All' you consent to all these purposes. You can also choose to indicate what purposes you will consent to using the custom selections and then click 'Accept selected'.

Decline All

Accept All

Necessary



Statistics



Marketing

